

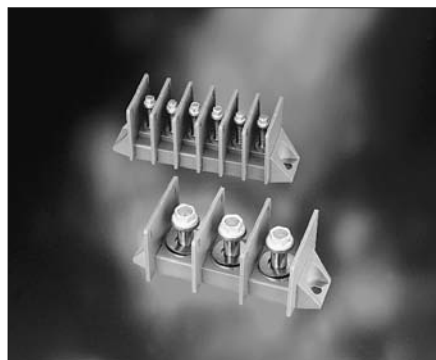


## 209 Series

### Applications

Electrical distribution for aircraft equipments

### Standards



### Description

- The terminal blocks 209 Series allows connection to one to 12 terminals
- A shunt can link the terminals
- Covers are available to protect electrically and mechanically the connections
- Technical characteristics following ASNE 0826

### Characteristics

#### Mechanical

- Terminals : stainless steel
- Block : peek
- Insulator : peek
- Shunt : nickel over brass
- Cover : PTFE
- Pillar bolt : stainless steel

#### Electrical

Specification	Working voltage	Current
<b>NSA 937903</b>	400 V	25 A
<b>NSA 937906</b>	600 V	100 A
<b>NSA 937905</b>	600 V	100 A
<b>ASNE 0421</b>	600 V	125 A
<b>ASNE 0647</b>	600 V	175 A
<b>NSA 937904</b>	600 V	210 A
<b>ASNE 0467</b>	600 V	210 A*

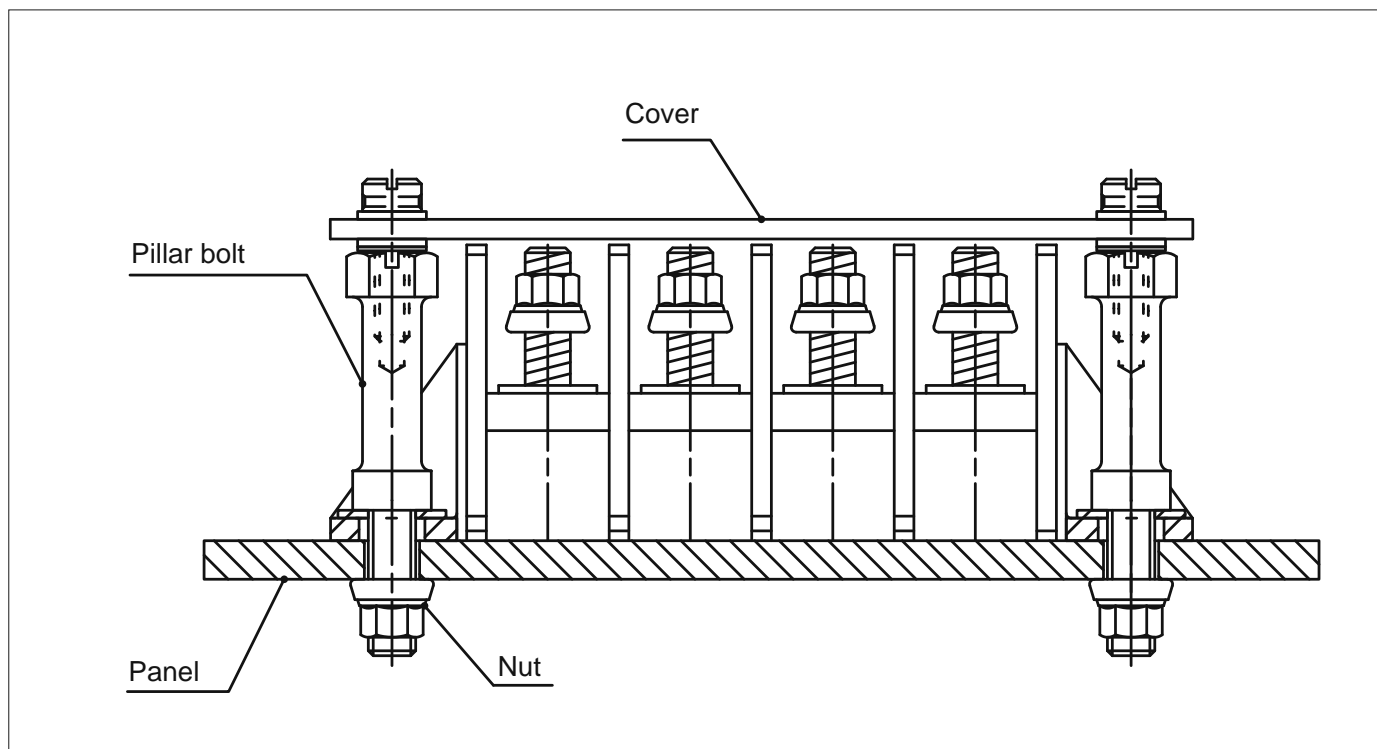
\* Indicative current depending on cables and terminals

- Insulation resistance : 500 000 M $\Omega$
- Dielectric rigidity : 5 kV rms

#### Climatic

- Temperature range :  
-55°C to +210° C permanent  
+250°C during 4000 hours  
peak at +300°C
- Resistance to fluids : fuel IPS-NATO F44
- Synthetic hydraulic fluid :  
SAE-Skydrol 500B4  
AS1241-Skydrol LD4
- Mineral lubricant :  
MIL-L 7870A - NATO 0142
- Synthetic lubricant :  
MIL-L 23699 - NATO 0156
- Cleaning fluid : MIL-C 25769 diluted
- Propanol + white spirit :  
Azeotrope 113 + methanol de-icing fluid  
NATO 5742

### Covers and pillar bolts assembly





# 209 Series

## Ordering information

Number	Terminals			Block (without washer)	Block (with washer)	Cover	Shunt			Pillar bolt	Washer			Specification
	Ø	Length	Pitch								Thickness = 2	Thickness = 4	Thickness = 9	
2	3.50	12.70	9.00	209 1 0 0 U 02 002	-	209 S 1002	209 T 120	-	209 D 008	209 D 113	209 D 114		NSA 937903	
	.138	.500	.354											
5	3.50	12.70	9.00	209 1 0 0 U 05 002	-	209 S 1005	209 T 120	-	209 D 008	209 D 113	209 D 114		NSA 937903	
	.138	.500	.354											
1	9.52	17.70	28.00	209 4 0 0 U 01 002	-	209 S 4001	-	-	209 D 012	-	-		NSA 937904	
	.375	.697	1.102											
3	9.52	17.70	28.00	209 4 0 0 U 03 002	-	209 S 4003	-	-	209 D 012	-	-		NSA 937904	
	.375	.697	1.102											
4	9.52	17.70	28.00	209 4 0 0 U 04 002	-	209 S 4004	-	-	209 D 012	-	-		NSA 937904	
	.375	.697	1.102											
3	4.82	23.00	14.50	209 2 1 0 U 03 002	-	209 S 2003	209 T 121	209 T 131	209 D 009			209 D 116	NSA 937905	
	.190	.906	.571											
6	4.82	23.00	14.50	209 2 1 0 U 06 002	-	209 S 2006	209 T 121	209 T 131	209 D 009			209 D 116	NSA 937905	
	.190	.906	.571											
10	4.82	23.00	14.50	209 2 1 0 U 10 002	-	209 S 2010	209 T 121	209 T 131	209 D 009			209 D 116	NSA 937905	
	.190	.906	.571											
12	4.82	23.00	14.50	209 2 1 0 U 12 002	-	209 S 2012	209 T 121	209 T 131	209 D 009			209 D 116	NSA 937905	
	.190	.906	.571											
4	4.82	14.00	14.50	209 2 0 0 U 04 002	-	209 S 2004	-	-	209 D 010	209 D 115			NSA 937906	
	.190	.551	.571											
6	6.35	16.50	19.50	209 3 0 0 U 06 002	-	209 S 3006	-	-	209 D 011	-	-		ASNE 0421	
	.250	.650	.768											
1	9.52	24.00	28.00	209 4 1 0 U 01 002	-	209 S 4001	-	-	209 D 009	-	-		ASNE 0467	
	.375	.945	1.102											
1	9.52	24.00	28.00	-	209 4 1 0 U 01 003	209 S 4001	-	-	209 D 009	-	-		ASNE 0467	
	.375	.945	1.102											
3	9.52	24.00	28.00	-	209 4 1 0 U 03 003	209 S 4003	-	-	209 D 009	-	-		ASNE 0467	
	.375	.945	1.102											
6	6.35	25.00	23.50	209 3 1 1 U 06 002		209 S 3106	-	-	209 D 009	-	-		ASNE 0647	
	.250	.984	.925											

## Cross reference

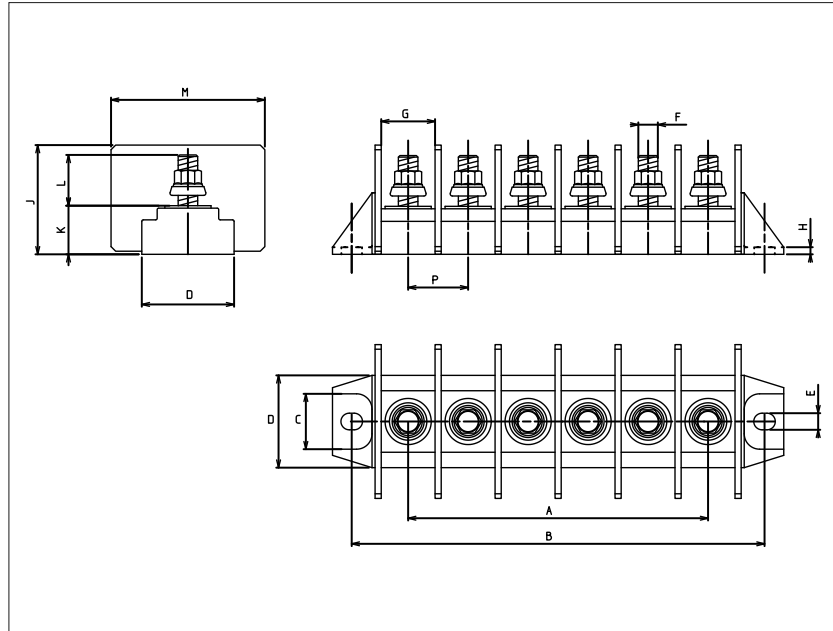
Designation	Souriau part number	NSA part number
<b>Block (without washer)</b>	209 1 0 0 U 02 002	NSA 93703 A02
	209 1 0 0 U 05 002	NSA 93703 A05
	209 2 0 0 U 04 002	NSA 93706 A04
	209 2 1 0 U 03 002	NSA 93705 A03
	209 2 1 0 U 06 002	NSA 93705 A06
	209 2 1 0 U 10 002	NSA 93705 A10
	209 2 1 0 U 12 002	NSA 93705 A12
	209 3 0 0 U 06 002	ASNE 0421 A06
	209 3 1 1 U 06 002	ASNE 0647 A06
	209 4 0 0 U 01 002	NSA 937904 A01
	209 4 0 0 U 03 002	NSA 937904 A03
	209 4 0 0 U 04 002	NSA 937904 A04
	209 4 1 0 U 01 002	ASNE 0467 A01
	209 4 1 0 U 01 003	ASNE 0467 R01
<b>Block (with washer)</b>	209 4 1 0 U 03 003	ASNE 0467 R03
	209 S 1002	NSA 937903 CA02
<b>Cover</b>	209 S 1005	NSA 937903 CA05
	209 S 2003	NSA 937905 C03
	209 S 2004	NSA 937906 C04
	209 S 2006	NSA 937905 C06
	209 S 2010	NSA 937905 C10
	209 S 2012	NSA 937905 C12
	209 S 3006	ASNE 0421 C06
	209 S 3106	ASNE 0647 C06
	209 S 4001	NSA 937904 C01
	209 S 4003	NSA 937904 C03
	209 S 4004	NSA 937903 C04

Designation	Souriau part number	NSA part number
<b>Shunt</b>	209 T 120	NSA 937903 SH02
	209 T 121	NSA 937905 SH02
	209 T 131	NSA 937905 SH03
<b>Pillar bolt</b>	209 D 008	NSA 937903 E
	209 D 009	ASNE 0647 E
	209 D 010	NSA 937906 E
	209 D 011	ASNE 0421 E
	209 D 012	NSA 937904 E
<b>Washer</b>	209 D 113	NSA 937903 F02
	209 D 114	NSA 937903 F04
	209 D 115	NSA 937906 F
	209 D 116	NSA 937905 F

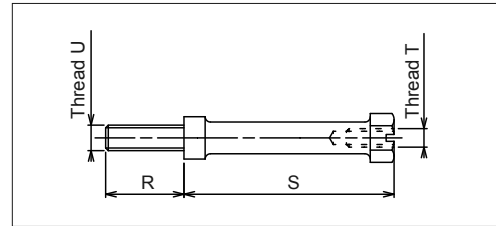


# 209 Series

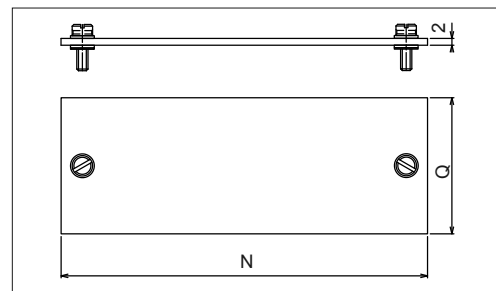
## Dimensions



## Pillar bolt for caps



## Caps



## Dimensions

Number	Terminals				P/N	A	B	C	D	E	G	H	J	K	M
	Ø F	Length L	Pitch P	Thread											
2	3.50	12.70	9.00		209 1 0 0 U 02 002	9.00	30.50	10.00	14.00	4.00	8.00	1.70	22.50	9.00	17.00
	.138	.500	.354	.1380-32UNC		.354	1.201	.394	.551	.157	.315	.067	.886	.354	.669
5	3.50	12.70	9.00		209 1 0 0 U 05 002	36.00	57.50	10.00	14.00	4.00	8.00	1.70	22.50	9.00	17.00
	.138	.500	.354	.1380-32UNC		1.417	2.264	.394	.551	.157	.315	.067	.886	.354	.669
1	9.52	17.70	28.00		209 4 0 0 U 01 002	-	45.20	17.00	30.00	5.40	26.00	2.30	35.50	14.50	50.00
	.375	.697	1.102	.3750-24UNF		-	1.780	.669	1.181	.213	1.024	.091	1.398	.571	1.969
3	9.52	17.70	28.00		209 4 0 0 U 03 002	56.00	101.20	17.00	30.00	5.40	26.00	2.30	35.50	14.50	50.00
	.375	.697	1.102	.3750-24UNF		2.205	3.984	.669	1.181	.213	1.024	.091	1.398	.571	1.969
4	9.52	17.70	28.00		209 4 0 0 U 04 002	84.00	129.20	17.00	30.00	5.40	26.00	2.30	35.50	14.50	50.00
	.375	.697	1.102	.3750-24UNF		3.307	5.087	.669	1.181	.213	1.024	.091	1.398	.571	1.969
3	4.82	23.00	14.50		209 2 1 0 U 03 002	23.00	60.70	17.00	30.00	5.40	12.50	2.30	41.80	15.80	40.00
	.190	.906	.571	.1900-32UNF		.906	2.390	.669	1.181	.213	.492	.091	1.646	.622	1.575
6	4.82	23.00	14.50		209 2 1 0 U 06 002	72.50	104.20	17.00	30.00	5.40	12.50	2.30	41.80	15.80	40.00
	.190	.906	.571	.1900-32UNF		2.854	4.102	.669	1.181	.213	.492	.091	1.646	.622	1.575
10	4.82	23.00	14.50		209 2 1 0 U 10 002	130.50	162.20	17.00	30.00	5.40	12.50	2.30	41.80	15.80	40.00
	.190	.906	.571	.1900-32UNF		5.138	6.386	.669	1.181	.213	.492	.091	1.646	.622	1.575
12	4.82	23.00	14.50		209 2 1 0 U 12 002	159.50	191.20	17.00	30.00	5.40	12.50	2.30	41.80	15.80	40.00
	.190	.906	.571	.1900-32UNF		6.280	7.528	.669	1.181	.213	.492	.091	1.646	.622	1.575
4	4.82	14.00	14.50		209 2 0 0 U 04 002	43.50	75.20	17.00	30.00	5.40	12.50	2.30	30.10	15.80	40.00
	.190	.551	.571	.1900-32UNF		1.713	2.961	.669	1.181	.213	.492	.091	1.185	.622	1.575
6	6.35	16.50	19.50		209 3 0 0 U 06 002	97.50	134.20	17.00	30.00	5.40	17.50	2.30	35.50	15.80	50.00
	.250	.650	.768	.2500-28UNF		3.839	5.283	.669	1.181	.213	.689	.091	1.398	.622	1.969
1	9.52	24.00	28.00		209 4 1 0 U 01 002	-	45.20	17.00	30.00	5.40	26.00	2.30	41.50	14.50	50.00
	.375	.945	1.102	.3750-24UNF		-	1.780	.669	1.181	.213	1.024	.091	1.634	.571	1.969
1	9.52	24.00	28.00		209 4 1 0 U 01 003	-	45.20	17.00	30.00	5.40	26.00	2.30	41.50	14.50	50.00
	.375	.945	1.102	.3750-24UNF		-	1.780	.669	1.181	.213	1.024	.091	1.634	.571	1.969
3	9.52	24.00	28.00		209 4 1 0 U 03 003	56.00	101.20	17.00	30.00	5.40	26.00	2.30	41.50	14.50	50.00
	.375	.945	1.102	.3750-24UNF		2.205	3.984	.669	1.181	.213	1.024	.091	1.634	.571	1.969
6	6.35	25.00	23.50		209 3 1 1 U 06 002	117.50	158.20	17.00	30.00	5.40	21.50	2.30	41.50	15.80	50.00
	.250	.984	.925	.2500-28UNF		4.626	6.228	.669	1.181	.213	.846	.091	1.634	.622	1.969



# 208 Series

## Applications

Distribution of electrical current for aircraft equipment

## Standards



## Description

- Bus bar allowing the connection of circuit breakers.
- Feeding through cables equipped with terminals.

## Characteristics

### Mechanical

- Insulator : black PEI with glass fibre 20%
- Phase bar : copper
- Coating resin : black epoxy
- Vibrations : sinus 3 g 10 to 2000 Hz

### Electrical

- Current rating per phase : 164 A
- Withstanding voltage : 1500 Vrms
- Insulation resistance : > 500 MΩ

### Climatic

- Working temperature : 15°C to 75°C
- Damp heat : 21 days / 40°C / 93% RH
- Resistance to salt spray : 48 hours

## Ordering information

Part number : **208 S 001**

## Dimensions (mm)

