

SPACECRAFT COMPONENTS CORP.

Your Connector Consultant Since 1962

DuraLock

RUGGED HYBRID CONNECTORS

A REVERSE BAYONET COUPLING

DESIGNED AROUND

MIL-DTL-38999 INSERT ARRANGEMENTS

SCPB39 SERIES



- ▶ Uses M39029 Contacts & Tools
- ▶ Uses M85049 Accessories
- ▶ Coupling provides a positive lock with an audible "Click" in 1/3 turn of the coupling nut
- ▶ Same footprint as MIL-STD-38999 Series III Square Flange Receptacle Shells & Plugs
- ▶ EMI/RFI Shell-to-Shell Grounding



SPACECRAFT
COMPONENTS CORP.

SCPB39 SERIES

MIL-DTL-38999 SERIES III REVERSE BAYONET COUPLING ORDERING INFORMATION

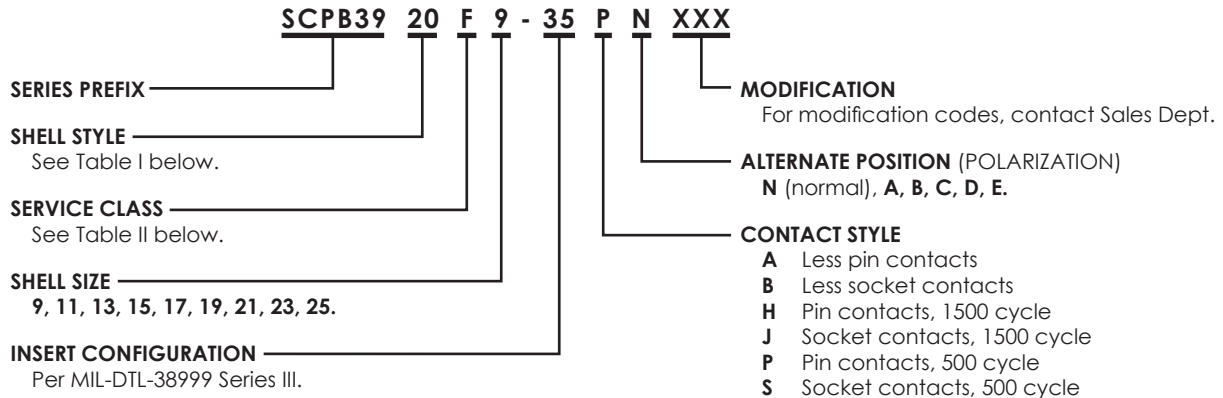


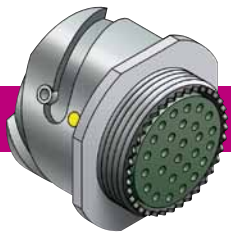
TABLE I. SHELL STYLE

PREFIX & SHELL STYLE	DESCRIPTION	AVAILABLE IN CLASS
SCPB3901	In-line receptacle	C, F, L, S, T, W, Z
SCPB3920	Wall mount receptacle	C, F, L, S, T, W, Z
SCPB3924	Jam nut receptacle	C, F, L, S, T, W, Z
SCPB3926	Straight plug, self-locking	C, F, L, S, T, W, Z

TABLE II. CLASS

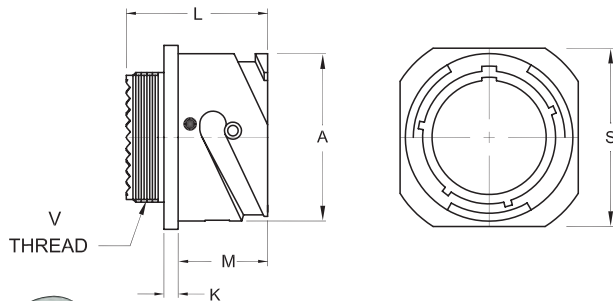
CLASS	CLASS†	DESCRIPTION	MATERIAL	FINISH	TEMPERATURE
C	SVC	Environmental	Aluminum	Non-conductive anodize, black	-65° to 200°C
F	SVF	Environmental	Aluminum	Electroless nickel	-65° to 200°C
L	SVL	Environmental	Stainless Steel	Electrodeposited nickel	-65° to 200°C
S	SVS	Environmental	Stainless Steel	Passivated	-65° to 200°C
T	SVT	Environmental	Aluminum	Nickel fluorocarbon polymer	-65° to 175°C
W	SVW	Environmental	Aluminum	Cadmium olive drab 500 hr. salt spray	-65° to 175°C
X	SVX	Environmental	Aluminum	Zinc cobalt	-65° to 175°C
Y	SVY	Environmental	Aluminum	Zinc cobalt, black	-65° to 175°C
Z	SVZ	Environmental	Aluminum	Zinc nickel, black, 500 hr.	-65° to 175°C

† Integrated Backshell (not illustrated).



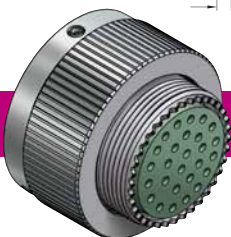
SCPB3901

IN-LINE RECEPTACLE



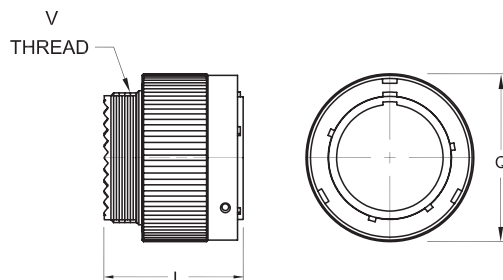
SHELL SIZE	A +0.00/+0.000 -0.15/-0.000	K +0.38/+0.015 -0.00/-0.000	L MAX	M +0.38/+0.015 -0.00/-0.000	S ±0.30/+0.012	V THREADS
9	18.20/ <i>0.717</i>	2.11/ <i>0.083</i>	31.50/ <i>1.240</i>	20.45/ <i>0.805</i>	18.42/ <i>0.725</i>	M12 x 1-6g
11	21.16/ <i>0.833</i>	2.11/ <i>0.083</i>	31.50/ <i>1.240</i>	20.45/ <i>0.805</i>	21.34/ <i>0.840</i>	M15 x 1-6g
13	24.60/ <i>0.969</i>	2.11/ <i>0.083</i>	31.50/ <i>1.240</i>	20.45/ <i>0.805</i>	24.77/ <i>0.975</i>	M18 x 1-6g
15	27.40/ <i>1.070</i>	2.11/ <i>0.083</i>	31.50/ <i>1.240</i>	20.45/ <i>0.805</i>	27.58/ <i>1.086</i>	M22 x 1-6g
17	30.80/ <i>1.213</i>	2.11/ <i>0.083</i>	31.50/ <i>1.240</i>	20.45/ <i>0.805</i>	30.99/ <i>1.220</i>	M25 x 1-6g
19	34.20/ <i>1.346</i>	2.11/ <i>0.083</i>	31.50/ <i>1.240</i>	20.45/ <i>0.805</i>	34.29/ <i>1.350</i>	M28 x 1-6g
21	37.40/ <i>1.472</i>	2.11/ <i>0.083</i>	31.50/ <i>1.240</i>	20.45/ <i>0.805</i>	37.59/ <i>1.480</i>	M31 x 1-6g
23	40.90/ <i>1.610</i>	2.11/ <i>0.083</i>	31.50/ <i>1.240</i>	20.45/ <i>0.805</i>	41.02/ <i>1.615</i>	M34 x 1-6g
25	46.70/ <i>1.839</i>	2.11/ <i>0.083</i>	31.50/ <i>1.240</i>	20.45/ <i>0.805</i>	46.86/ <i>1.845</i>	M37 x 1-6g

DIMENSIONS IN *ITALICS* ARE INCHES.



SCPB3926

STRAIGHT PLUG



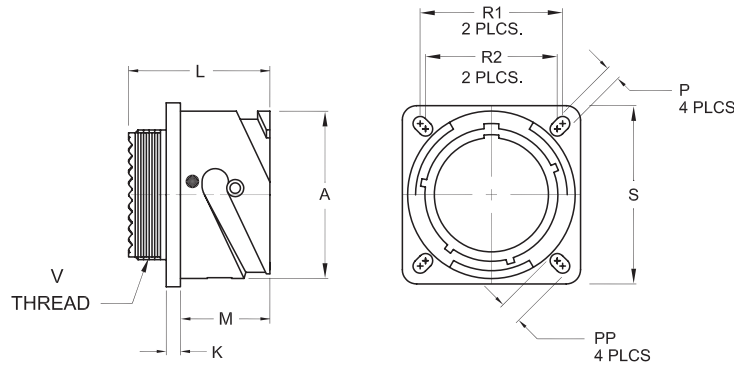
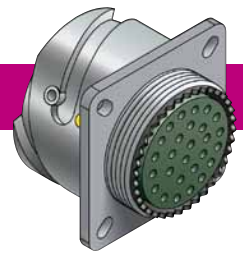
SHELL SIZE	Q MAX	L MAX	V THREADS
9	22.80/ <i>0.898</i>	31.50/ <i>1.240</i>	M12 x 1-6g
11	25.90/ <i>1.020</i>	31.50/ <i>1.240</i>	M15 x 1-6g
13	29.21/ <i>1.150</i>	31.50/ <i>1.240</i>	M18 x 1-6g
15	33.00/ <i>1.299</i>	31.50/ <i>1.240</i>	M22 x 1-6g
17	36.50/ <i>1.437</i>	31.50/ <i>1.240</i>	M25 x 1-6g
19	39.90/ <i>1.571</i>	31.50/ <i>1.240</i>	M28 x 1-6g
21	43.10/ <i>1.697</i>	31.50/ <i>1.240</i>	M31 x 1-6g
23	46.60/ <i>1.835</i>	31.50/ <i>1.240</i>	M34 x 1-6g
25	53.40/ <i>2.102</i>	31.50/ <i>1.240</i>	M37 x 1-6g

DIMENSIONS IN *ITALICS* ARE INCHES.



SCPB3920

WALL MOUNT RECEPTACLE

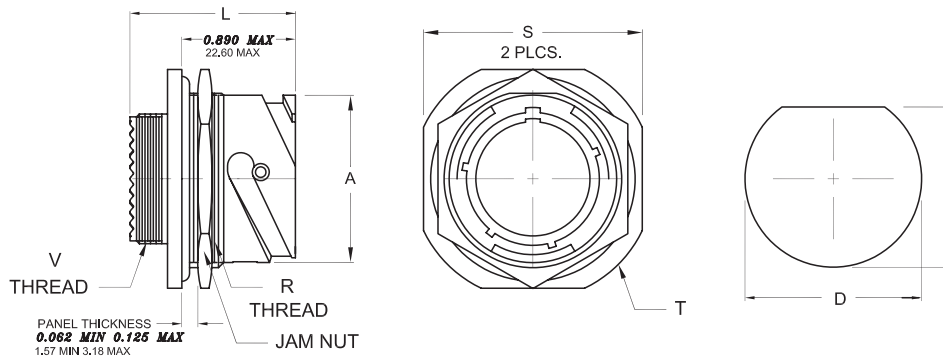


SHELL SIZE	A +0.00/+0.000 -0.15/-0.006	K +0.38/+0.015 -0.00/-0.000	L MAX	M +0.38/+0.015 -0.00/-0.000	P ±0.20/±0.008	PP ±0.20/±0.005	R1	R2	S ±0.30/±0.012	V THREADS
9	18.20/ <i>0.717</i>	2.11/ <i>0.083</i>	31.50/ <i>1.240</i>	20.45/ <i>0.805</i>	3.25/ <i>0.128</i>	5.49/ <i>0.216</i>	18.26/ <i>0.719</i>	15.09/ <i>0.594</i>	23.80/ <i>0.937</i>	M12 x 1-6g
11	21.16/ <i>0.833</i>	2.11/ <i>0.083</i>	31.50/ <i>1.240</i>	20.45/ <i>0.805</i>	3.25/ <i>0.128</i>	4.93/ <i>0.194</i>	20.62/ <i>0.812</i>	18.26/ <i>0.719</i>	26.20/ <i>1.031</i>	M15 x 1-6g
13	24.60/ <i>0.969</i>	2.11/ <i>0.083</i>	31.50/ <i>1.240</i>	20.45/ <i>0.805</i>	3.25/ <i>0.128</i>	4.93/ <i>0.194</i>	23.01/ <i>0.906</i>	20.02/ <i>0.812</i>	28.60/ <i>1.126</i>	M18 x 1-6g
15	27.40/ <i>1.079</i>	2.11/ <i>0.083</i>	31.50/ <i>1.240</i>	20.45/ <i>0.805</i>	3.25/ <i>0.128</i>	4.93/ <i>0.194</i>	24.61/ <i>0.969</i>	23.01/ <i>0.906</i>	31.00/ <i>1.220</i>	M22 x 1-6g
17	30.80/ <i>1.213</i>	2.11/ <i>0.083</i>	31.50/ <i>1.240</i>	20.45/ <i>0.805</i>	3.25/ <i>0.128</i>	4.93/ <i>0.194</i>	20.07/ <i>1.062</i>	24.61/ <i>0.969</i>	33.30/ <i>1.311</i>	M25 x 1-6g
19	34.20/ <i>1.346</i>	2.11/ <i>0.083</i>	31.50/ <i>1.240</i>	20.45/ <i>0.805</i>	3.25/ <i>0.128</i>	4.93/ <i>0.194</i>	29.36/ <i>1.156</i>	20.97/ <i>1.062</i>	30.50/ <i>1.437</i>	M28 x 1-6g
21	37.40/ <i>1.472</i>	2.11/ <i>0.083</i>	31.50/ <i>1.240</i>	20.45/ <i>0.805</i>	3.25/ <i>0.128</i>	4.93/ <i>0.194</i>	31.75/ <i>1.250</i>	29.36/ <i>1.156</i>	39.70/ <i>1.563</i>	M31 x 1-6g
23	40.90/ <i>1.610</i>	2.11/ <i>0.083</i>	31.50/ <i>1.240</i>	20.45/ <i>0.805</i>	3.91/ <i>0.154</i>	6.15/ <i>0.242</i>	34.93/ <i>1.375</i>	31.75/ <i>1.250</i>	42.90/ <i>1.689</i>	M34 x 1-6g
25	46.70/ <i>1.839</i>	2.11/ <i>0.083</i>	31.50/ <i>1.240</i>	20.45/ <i>0.805</i>	3.91/ <i>0.154</i>	6.15/ <i>0.242</i>	38.10/ <i>1.500</i>	34.93/ <i>1.375</i>	46.00/ <i>1.811</i>	M37 x 1-6g

DIMENSIONS IN *ITALICS* ARE INCHES.

SCPB3924

JAM NUT RECEPTACLE*



SHELL SIZE	A +0.00/+0.000 -0.15/-0.006	K +0.90/+0.035 -0.10/-0.004	L MAX	R THREADS	S ±0.40/±0.016	T ±0.30/±0.011	V THREADS	JAM NUT	D +0.25/+0.010 -0.00/-0.000	E +0.00/+0.000 -0.25/-0.010
9	18.20/ <i>0.717</i>	2.21/ <i>0.067</i>	32.51/ <i>1.260</i>	M20 x 1-6g	31.80/ <i>1.252</i>	34.90/ <i>1.374</i>	M12 x 1-6g	D38999/28-2	20.96/ <i>0.825</i>	19.59/ <i>0.771</i>
11	21.16/ <i>0.833</i>	2.21/ <i>0.087</i>	32.51/ <i>1.280</i>	M25 x 1-6g	34.90/ <i>1.374</i>	38.10/ <i>1.500</i>	M15 x 1-6g	D38999/28-3	25.65/ <i>1.010</i>	24.26/ <i>0.955</i>
13	24.60/ <i>0.969</i>	2.21/ <i>0.067</i>	32.51/ <i>1.260</i>	M28 x 1-6g	38.10/ <i>1.500</i>	41.30/ <i>1.626</i>	M18 x 1-6g	D38999/28-4	28.83/ <i>1.135</i>	27.56/ <i>1.085</i>
15	27.40/ <i>1.079</i>	2.21/ <i>0.087</i>	32.51/ <i>1.280</i>	M32 x 1-6g	41.30/ <i>1.626</i>	44.50/ <i>1.752</i>	M22 x 1-6g	D38999/28-6	32.01/ <i>1.260</i>	30.73/ <i>1.210</i>
17	30.80/ <i>1.213</i>	2.21/ <i>0.087</i>	32.51/ <i>1.280</i>	M35 x 1-6g	46.00/ <i>1.811</i>	49.20/ <i>1.937</i>	M25 x 1-6g	D38999/28-8	35.18/ <i>1.385</i>	33.91/ <i>1.335</i>
19	34.20/ <i>1.346</i>	3.00/ <i>0.118</i>	32.51/ <i>1.280</i>	M38 x 1-6g	49.20/ <i>1.937</i>	52.40/ <i>2.063</i>	M28 x 1-6g	D38999/28-9	38.35/ <i>1.510</i>	37.08/ <i>1.460</i>
21	37.40/ <i>1.472</i>	3.00/ <i>0.118</i>	32.51/ <i>1.280</i>	M41 x 1-6g	52.40/ <i>2.063</i>	55.60/ <i>2.189</i>	M31 x 1-6g	D38999/28-10	41.53/ <i>1.635</i>	40.26/ <i>1.585</i>
23	40.90/ <i>1.610</i>	3.00/ <i>0.118</i>	32.51/ <i>1.280</i>	M44 x 1-6g	55.60/ <i>2.189</i>	58.70/ <i>2.311</i>	M34 x 1-6g	D38999/28-11	44.70/ <i>1.760</i>	43.43/ <i>1.710</i>
25	46.70/ <i>1.839</i>	3.00/ <i>0.118</i>	32.51/ <i>1.280</i>	M50 x 1-6g	61.70/ <i>2.429</i>	64.80/ <i>2.551</i>	M37 x 1-6g	SC99928-12	50.70/ <i>1.996</i>	49.43/ <i>1.946</i>

DIMENSIONS IN *ITALICS* ARE INCHES.

* The cut-out for the Jam Nut Receptacle is one size larger than MIL-DTL-38999 Series III.



SPACECRAFT COMPONENTS CORP.

Your Connector Consultant Since 1962



SCP 5015 STYLE
CONNECTORS
(CATALOG 102)



SCPT 26482 STYLE
SC1 38999 SERIES I
SC2 38999 SERIES II
SC39 38999 SERIES III
(CATALOG 202)



SCPB SERIES
(CATALOG 302)



CONNECTOR
ACCESSORIES
(CATALOG 401)



CONNECTORS
WITH INTEGRATED
BACKSHELLS
(CATALOG 601)

Try our other
connector products.
Catalogs available.

COMING SOON...
CATALOG 701
All Plastic Connectors



**SPACECRAFT
COMPONENTS CORP.**



Headquarters

3040 Clayton Street
North Las Vegas, NV 89032

Phone: 702.851.7600
Fax: 702.851.7620

Email: salesinfo@spacecraft.com
Web: www.spacecraft.com

Florida Office

10732 NW 53rd St.
Sunrise, FL 33351
Tel: 954.748.4540
Fax: 954.748.4128

Arizona Office

519 W. Lone Cactus Dr.
Suite 401
Phoenix, AZ 85027
Tel: 623.580.1162
Fax: 623.580.1165

Italy Office

Spacecraft Components, sp A
Milan, Italy
+39 (335) 719.4512

Mexico Office

Av. Constituyentes 13-6 Col. Pueblo Nuevo
Queretaro, Qro 76900
+52 442 341 69 63

AUG.2012
SF-131

COMPILED AND PRODUCED BY SPACECRAFT COMPONENTS CORP.
©2012 SPACECRAFT COMPONENTS CORP., NORTH LAS VEGAS, NV 89032